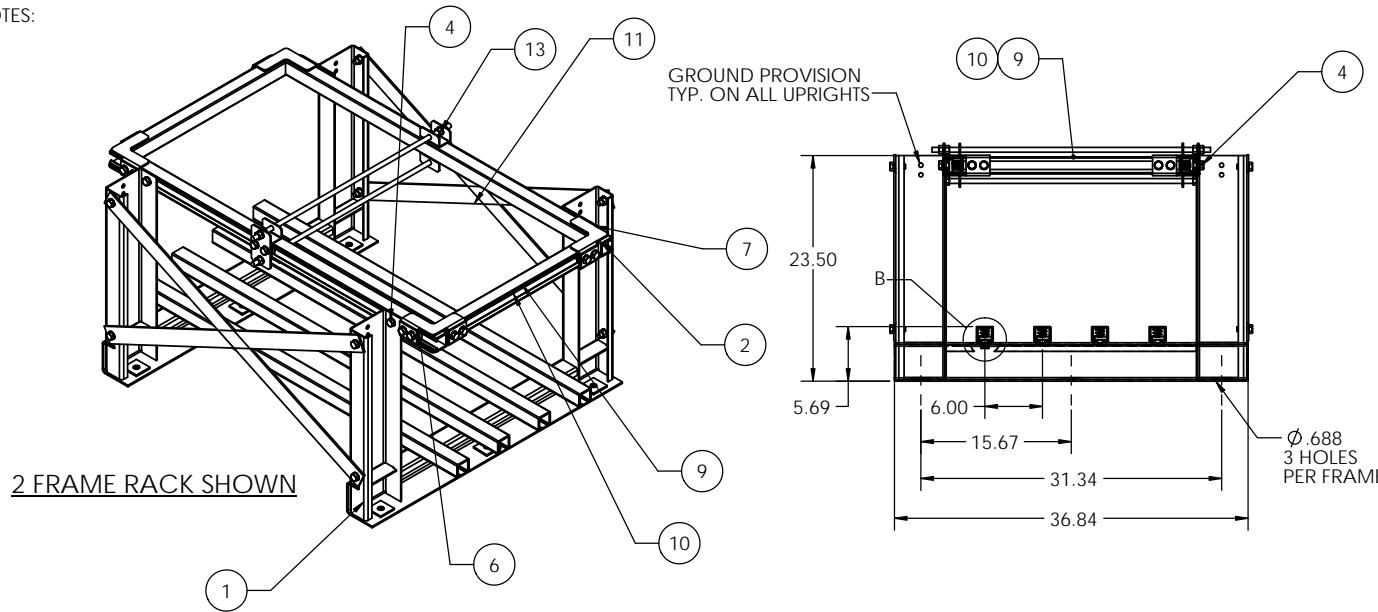
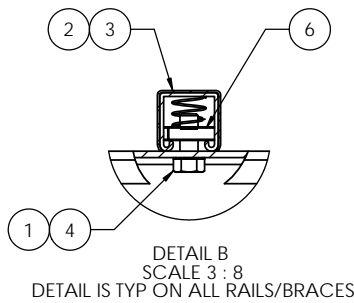
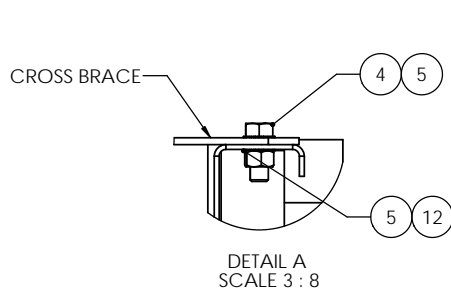


NOTES:



2 FRAME RACK SHOWN

TYP END VIEW



REVISIONS			
REV.	DESCRIPTION	DATE	APPROVED
A	INITIAL RELEASE	7-22-10	RNA
B	UPDATE PER CERTIFICATION CHANGES	7-20-11	RNA

RACK DIMENSIONS AND OTHER SPECS					
PAR NUMBER	RACK LENGTH DIM "L" (FT)	DIM "A" (IN)	DIM "B" (IN)	DIM "C" (IN)	WEIGHT
WR576-1T1R-48-Z4	4	6	36	N/A	164
WR576-1T1R-60-Z4	5	12	36	N/A	176
WR576-1T1R-72-Z4	6	12	48	N/A	192
WR576-1T1R-84-Z4	7	6	36	N/A	262
WR576-1T1R-96-Z4	8	12	36	N/A	275
WR576-1T1R-108-Z4	9	6	48	N/A	295
WR576-1T1R-120-Z4	10	12	48	N/A	307
WR576-1T1R-132-Z4	11	12	36	36	373
WR576-1T1R-144-Z4	12	12	48	36	390
WR576-1T1R-156-Z4	13	6	48	48	410
WR576-1T1R-168-Z4	14	12	48	48	423
WR576-1T1R-180-Z4	15	6	48	36	487
WR576-1T1R-192-Z4	16	12	48	36	499
WR576-1T1R-204-Z4	17	6	48	48	520
WR576-1T1R-216-Z4	18	12	48	48	532
WR576-1T1R-228-Z4	19	6	48	36	597
WR576-1T1R-240-Z4	20	12	48	36	609

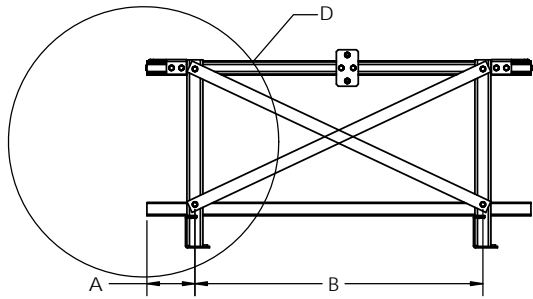
BRACE TABLE			
RACK MODEL	RACK LENGTH (FT)	BRACE P/N	
		BRC-010400	BRC-010500
WR576-1T1R-48-Z4	4	4	N/A
WR576-1T1R-60-Z4	5	4	N/A
WR576-1T1R-72-Z4	6	N/A	4
WR576-1T1R-84-Z4	7	8	N/A
WR576-1T1R-96-Z4	8	8	N/A
WR576-1T1R-108-Z4	9	N/A	8
WR576-1T1R-120-Z4	10	N/A	8
WR576-1T1R-132-Z4	11	12	NA
WR576-1T1R-144-Z4	12	8	4
WR576-1T1R-156-Z4	13	N/A	12
WR576-1T1R-168-Z4	14	N/A	12
WR576-1T1R-180-Z4	15	8	8
WR576-1T1R-192-Z4	16	8	8
WR576-1T1R-204-Z4	17	N/A	16
WR576-1T1R-216-Z4	18	N/A	16
WR576-1T1R-228-Z4	19	8	12
WR576-1T1R-240-Z4	20	8	12

PARTS LIST			4'	5'	6'	7'	8'	9'	10'	11'	12'	13'	14'	15'	16'	17'	18'	19'	20'	
1	FRM-024100	FRAME, 1 TIER, ZONE 4, OP2S 2750-3000	2	2	2	3	3	3	3	4	4	4	4	5	5	5	5	6	6	6
2	BTR-000300	RAIL, BATTERY, 1.625 X 1.625 X "L"	6	6	6	6	6	6	6	6	6	6	6	6	6	6	6	6	6	6
3	MIS-000300	PLASTIC COVER, BATT. RAIL, "L"	6	6	6	6	6	6	6	6	6	6	6	6	6	6	6	6	6	6
4	BLTI1/2-13X1-1/4HEXZC	BOLT 1/2-13x1-1/4", HEX, ZC	36	36	36	46	46	46	56	56	56	56	66	66	66	66	66	76	76	76
5	WSH1/2EXTLKZC	WASHER, 1/2,EXTERNALTOOTH, LOCK, ZC	44	44	44	58	58	58	72	72	72	72	86	86	86	86	100	100	100	100
6	P1010	NUT,UNISTRUT, 1/2-13	28	28	28	34	34	34	40	40	40	40	46	46	46	46	52	52	52	52
7	BKT-000902	BRACKET, END, SHORT, 1/2" HDWR	4	4	4	4	4	4	4	4	4	4	4	4	4	4	4	4	4	4
8	BKT-002102	BRACKET, END, BOTTOM, 1/2" HDWR	4	4	4	4	4	4	4	4	4	4	4	4	4	4	4	4	4	4
9	MIS-002400	PLASTIC COVER, BATT. RAIL, 22.5" LONG	2	2	2	2	2	2	2	2	2	2	2	2	2	2	2	2	2	2
10	BRC-003000	END BRACE, WET CELL RACK, Z4, 22.5"	2	2	2	2	2	2	2	2	2	2	2	2	2	2	2	2	2	2
11	SEE BRACE TABLE	BRACE, CROSS	REFERENCE BRACE TABLE FOR BRACE TYPE AND QTY.																	
12	NUT1/2-13HEXZC	HEX NUT, 1/2-13, ZINC	8	8	8	12	12	12	12	16	16	16	16	20	20	20	20	24	24	24
13	KIT-003729	INTER. SUPPORT, WET CELL, 1/2" HDWR, 29"	0	0	0	1	1	1	1	2	2	2	2	2	2	2	2	2	2	2

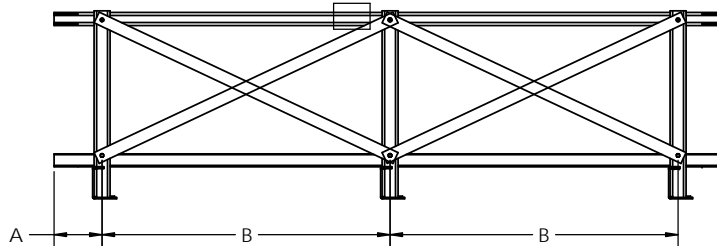
NOTES:

1. EPOXY POWDER COATED FRAMES
2. STANDARD RAILS AND SEISMIC BRACES ARE GALVANIZED.
3. REFER TO PAGE 2 FOR FRAME TO FRAME DIMENSIONS DEPENDING ON THE LENGTH OF RACK.
4. BRACES USED ARE DEPENDENT ON DIMENSIONS BETWEEN FRAMES. REFERENCE PAGE 2 AND BRACE TABLES TO DETERMINE LOCATION OF BRACES DEPENDING ON THE BRACE'S LENGTHS.

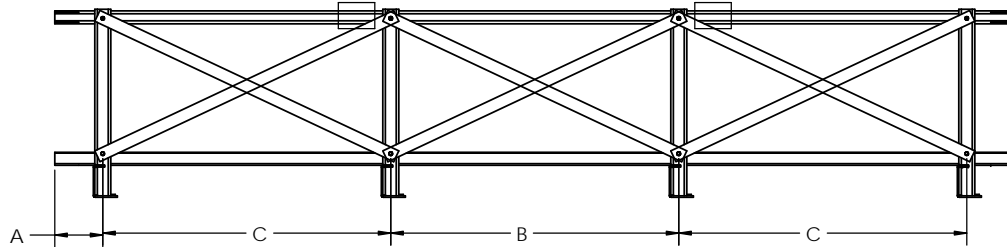
UNLESS OTHERWISE SPECIFIED			DIMENSIONS ARE IN INCHES			TOLERANCES:		
ANGULAR: MACH ± .5 BEND ± 1			TWO PLACE DECIMAL ± .01			THREE PLACE DECIMAL ± .005		
PROJECTION:	AS SHOWN	DRAWN:	NAME:	DATE:	TITLE: OP2S SERIES 2750-3000, 1 TIER/1 ROW ZONE 4 RACKS			
MATERIAL:	SEE NOTE 1	CHECKED:			SIZE:	DWG. NO.:	REV:	
FRESH:	SEE NOTE 2	MFG APPR:			C	WR576-1T1R Z4-SPEC	B	
USED ON:		DO NOT SCALE DRAWING			SCALE: 1:8	WEIGHT:		SHEET 1 OF 2



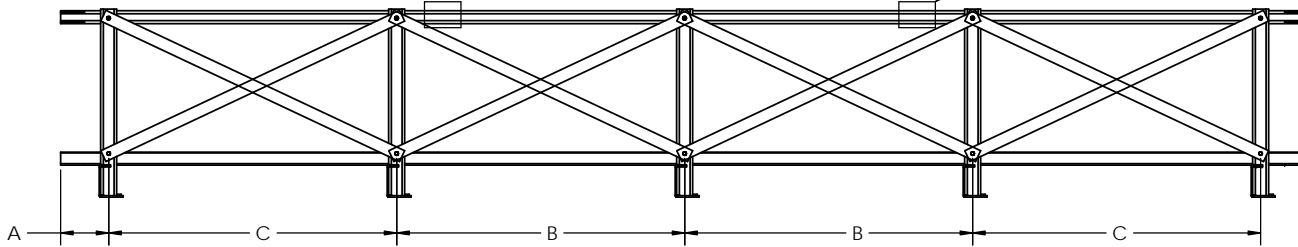
4' - 6' RACKS (2 FRAMES)



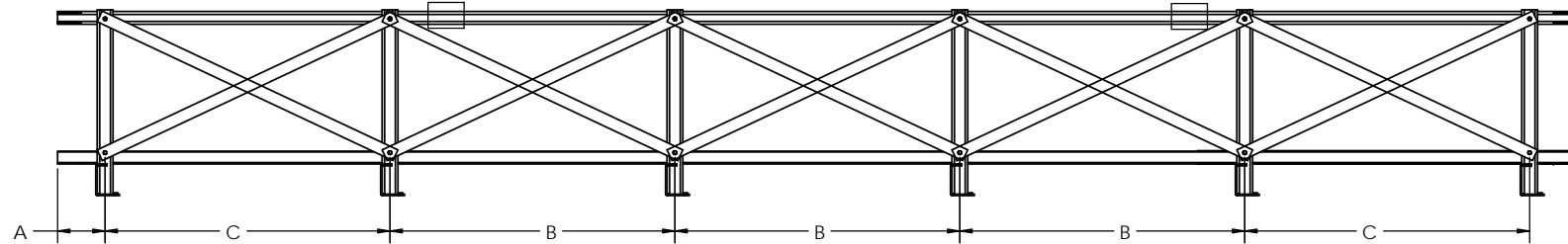
7' - 10' RACKS (3 FRAMES)



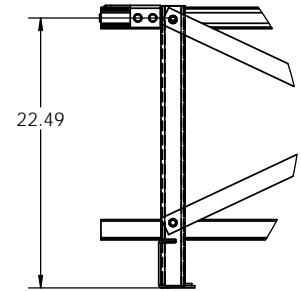
11' - 14' RACKS (4 FRAMES)



15' - 18' RACKS (5 FRAMES)



19' - 20' RACKS (6 FRAMES)



DETAIL D
DETAILS SHOWS HEIGHT
OF SEISMIC BRACING. THE HEIGHT
IS DEPENDENT ON THE MODEL OF
OPzS BATTERY

THE RACKS SHOWN IN THIS VIEW ARE FOR
REFERENCE ONLY. USE DIMENSIONS
SHOWN FOR ASSEMBLY. ACTUAL RACK
MAY LOOK DIFFERENT

UNLESS OTHERWISE SPECIFIED:				TITLE: OPzS SERIES, 2750-3000, 1 TIER/1 ROW ZONE 4 RACKS	
DIMENSIONS ARE IN INCHES		DRAWN	NAME	DATE	
TOLERANCES:		CHECKED			
ANGULAR: MACH ± .5 BEND ± 1		ENG APPR			
TWO PLACE DECIMAL ± .01		MFG APPR			
THREE PLACE DECIMAL ± .005		C.A.			
PROJECTION:		SEE NOTE 1		SIZE	DWG. NO.
MATERIAL:		SEE NOTE 2		C	WR576-1T1R-Z4-SPEC
FINISH:		SEE NOTE 2		SCALE: 1:8	WEIGHT:
DO NOT SCALE DRAWING		DO NOT SCALE DRAWING		SHEET 2 OF 2	
USED ON				REV	B