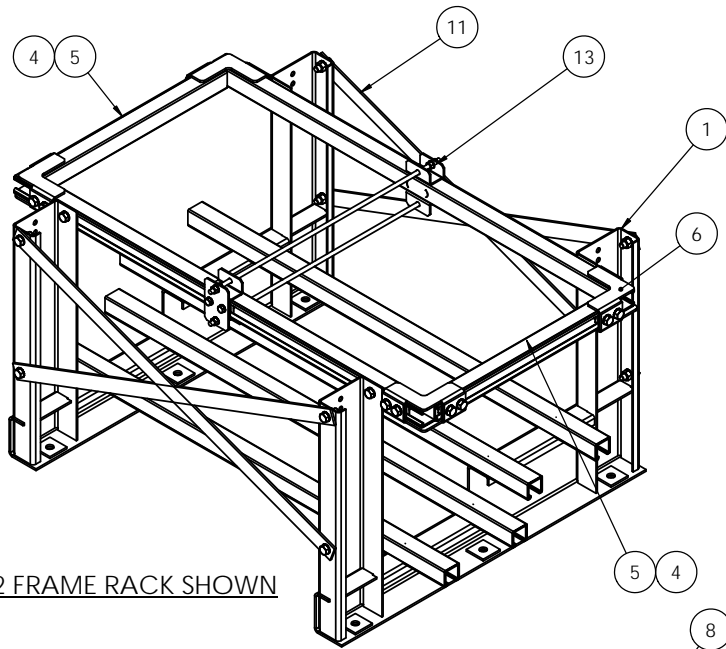
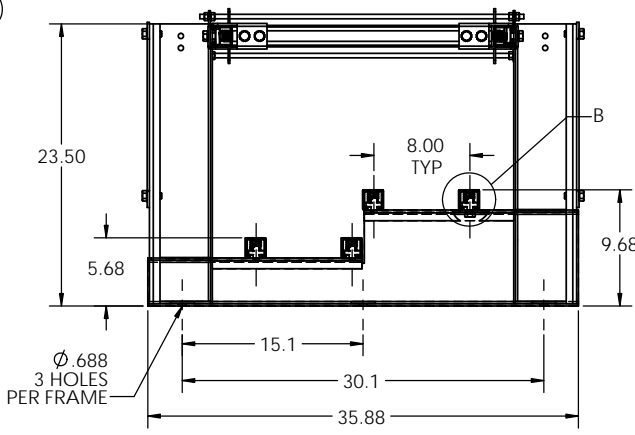


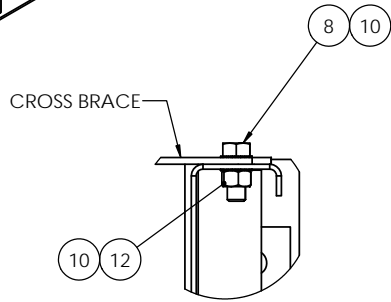
NOTES:



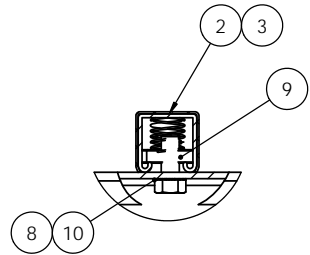
2 FRAME RACK SHOWN



TYP END VIEW



CROSS BRACE



DETAIL B
SCALE 3 : 8
DETAIL IS TYP ON ALL RAILS/BRACES

REVISIONS			
REV.	DESCRIPTION	DATE	APPROVED
A	INITIAL RELEASE	7-26-10	RNA
B	UPDATE PER CERTIFICATION CHANGES	8/22/2011	RNA

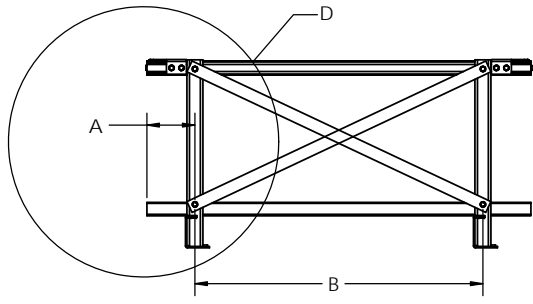
PAR NUMBER	RACK LENGTH DIM "L" (FT)	DIM "A" DIM (IN)	DIM "B" DIM (IN)	DIM "C" DIM (IN)	WEIGHT
WR275-1T2S-48-Z4	4	6	36	N/A	162
WR275-1T2S-60-Z4	5	12	36	N/A	174
WR275-1T2S-72-Z4	6	12	48	N/A	188
WR275-1T2S-84-Z4	7	6	36	N/A	257
WR275-1T2S-96-Z4	8	12	36	N/A	269
WR275-1T2S-108-Z4	9	6	48	N/A	286
WR275-1T2S-120-Z4	10	12	48	N/A	298
WR275-1T2S-132-Z4	11	12	36	36	362
WR275-1T2S-144-Z4	12	12	48	36	376
WR275-1T2S-156-Z4	13	6	48	48	392
WR275-1T2S-168-Z4	14	12	48	48	404
WR275-1T2S-180-Z4	15	6	48	36	474
WR275-1T2S-192-Z4	16	12	48	36	486
WR275-1T2S-204-Z4	17	6	48	48	502
WR275-1T2S-216-Z4	18	12	48	48	514
WR275-1T2S-228-Z4	19	6	48	36	581
WR275-1T2S-240-Z4	20	12	48	36	593

BRACE TABLE			
RACK MODEL	RACK LENGTH (FT)	BRACE P/N	
		BRC-008700	BRC-008800
WR275-1T2S-48-Z4	4	4	N/A
WR275-1T2S-60-Z4	5	4	N/A
WR275-1T2S-72-Z4	6	N/A	4
WR275-1T2S-84-Z4	7	8	N/A
WR275-1T2S-96-Z4	8	8	N/A
WR275-1T2S-108-Z4	9	N/A	8
WR275-1T2S-120-Z4	10	N/A	8
WR275-1T2S-132-Z4	11	12	NA
WR275-1T2S-144-Z4	12	8	4
WR275-1T2S-156-Z4	13	N/A	12
WR275-1T2S-168-Z4	14	N/A	12
WR275-1T2S-180-Z4	15	8	8
WR275-1T2S-192-Z4	16	8	8
WR275-1T2S-204-Z4	17	N/A	16
WR275-1T2S-216-Z4	18	N/A	16
WR275-1T2S-228-Z4	19	8	12
WR275-1T2S-240-Z4	20	8	12

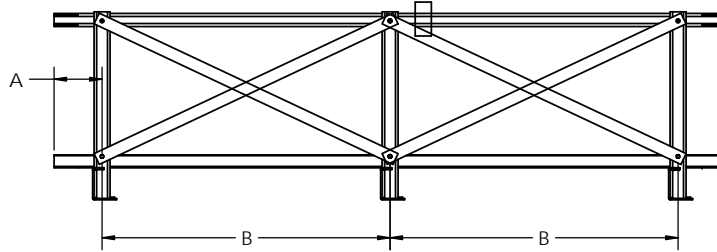
PARTS LIST																				
ITEM NO.	PART NUMBER	DESCRIPTION	4'	5'	6'	7'	8'	9'	10'	11'	12'	13'	14'	15'	16'	17'	18'	19'	20'	
1	FRM-025600	FRAME, 2 STEP, SIT2V 1100-1500, Z4	2	2	2	3	3	3	3	4	4	4	4	5	5	5	5	6	6	
2	BTR-000300	RAIL, BATTERY, 1.625 X 1.625 X "L"	6	6	6	6	6	6	6	6	6	6	6	6	6	6	6	6	6	
3	MIS-001900	PLASTIC COVER, BATT. RAIL, "L"	6	6	6	6	6	6	6	6	6	6	6	6	6	6	6	6	6	
4	BRC-003500	BRACE, END, SEISMIC, 21.625"	2	2	2	2	2	2	2	2	2	2	2	2	2	2	2	2	2	
5	MIS-002700	PLASTIC COVER, BATT. RAIL, 21.625"	2	2	2	2	2	2	2	2	2	2	2	2	2	2	2	2	2	
6	BKT-000902	BRACKET, CORNER, SHORT, 1/2" HDWR	4	4	4	4	4	4	4	4	4	4	4	4	4	4	4	4	4	
7	BKT-002102	BRACKET, CORNER, BOTTOM, 1/2" HDWR	4	4	4	4	4	4	4	4	4	4	4	4	4	4	4	4	4	
8	HEXBOLT1/2-13X1-1/4ZC	HEX BOLT, 1/2-13 X 1-1/4", ZC	36	36	36	44	44	44	44	52	52	52	52	60	60	60	60	68	68	
9	P1010	NUT, UNISTRUT, 1/2-13	28	28	28	34	34	34	34	40	40	40	40	46	46	46	46	52	52	
10	EXTTOOTHWASHER1/2ZC	WASHER, LOCK, EXTERNAL TOOTH, 1/2", ZC	44	44	44	44	58	58	58	72	72	72	72	86	86	86	86	100	100	
11	SEE BRACE TABLE	BRACE, CROSS	SEE CROSS BRACE CHART																	
12	HEXNUT3/8-16X1-3/4ZINC	HEX NUT, 3/8-16, ZINC	8	8	8	12	12	12	12	16	16	16	16	20	20	20	20	24	24	
13	KIT-003627	INTER. SUPPORT, WCR, 3/8 HDWR, 27"	0	0	0	1	1	1	1	1	1	1	1	2	2	2	2	2	2	

- NOTES:
- EPOXY POWDER COATED FRAMES
 - STANDARD RAILS AND SEISMIC BRACES ARE GALVANIZED.
 - REFER TO PAGE 2 FOR FRAME TO FRAME DIMENSIONS DEPENDING ON THE LENGTH OF RACK.
 - BRACES USED ARE DEPENDENT ON DIMENSIONS BETWEEN FRAMES. REFERENCE PAGE 2 AND BRACE TABLES TO DETERMINE LOCATION OF BRACES DEPENDING ON THE BRACE'S LENGTHS.

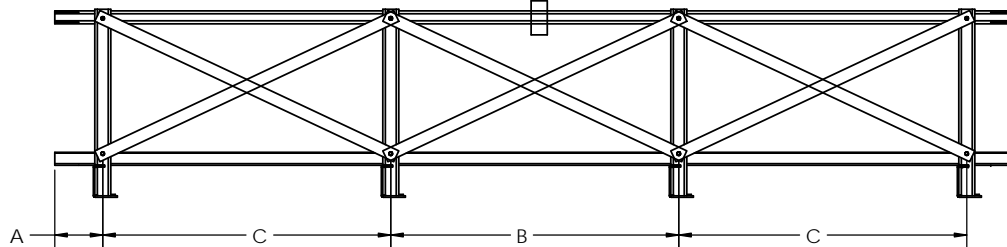
UNLESS OTHERWISE SPECIFIED		DRAWN		NAME	DATE	TITLE: SIT STEP 1100-1500 1 TIER/2 STEP ZONE 4 RACKS
DIMENSIONS ARE IN INCHES TOLERANCES:		CHECKED			7-26-10	
ANGULAR: MACH ± .5 BEND ± 1 TWO PLACE DECIMAL ± .01 THREE PLACE DECIMAL ± .005		MATERIAL		ENG APPR		SIZE: C
PROJECTION:		SEE NOTE 1		MFG APPR		DWG. NO. B
MATERIAL		SEE NOTE 2		Q.A.		WR275-1T2S Z4
USED ON		DO NOT SCALE DRAWING				SCALE: 1:8 WEIGHT: SHEET 1 OF 2



4' - 6' RACKS (2 FRAMES)

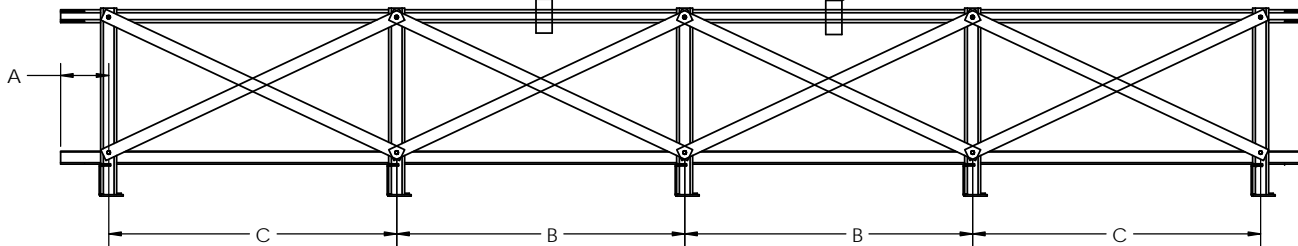


7' - 10' RACKS (3 FRAMES)

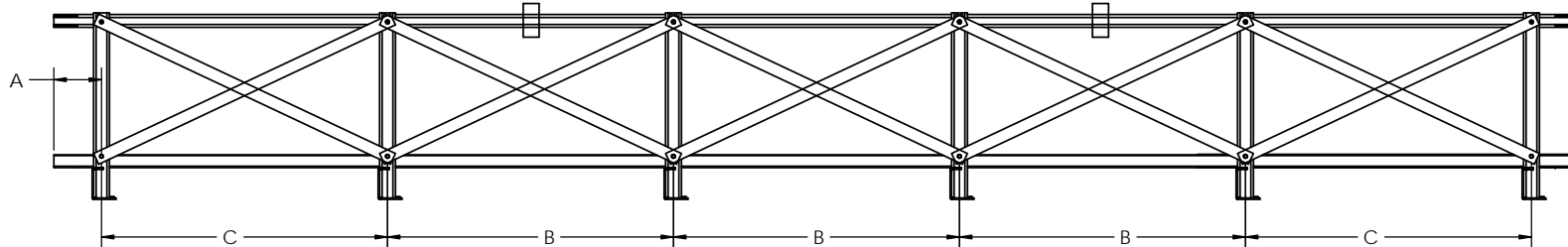


11' - 14' RACKS (4 FRAMES)

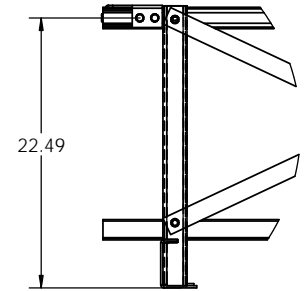
LOCATE INTERMEDIATE SUPPORTS APPROXIMATELY AS SHOWN.



15' - 18' RACKS (5 FRAMES)



19' - 20' RACKS (6 FRAMES)



DETAIL D
DETAILS SHOWS HEIGHT PLACEMENT
OF SEISMIC BRACING. THE HEIGHT
IS DEPENDENT ON THE MODEL OF
STT BATTERY