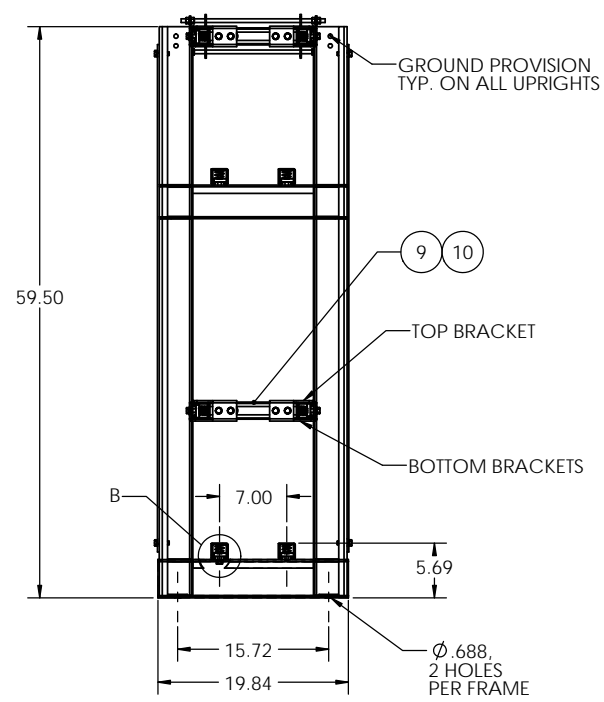
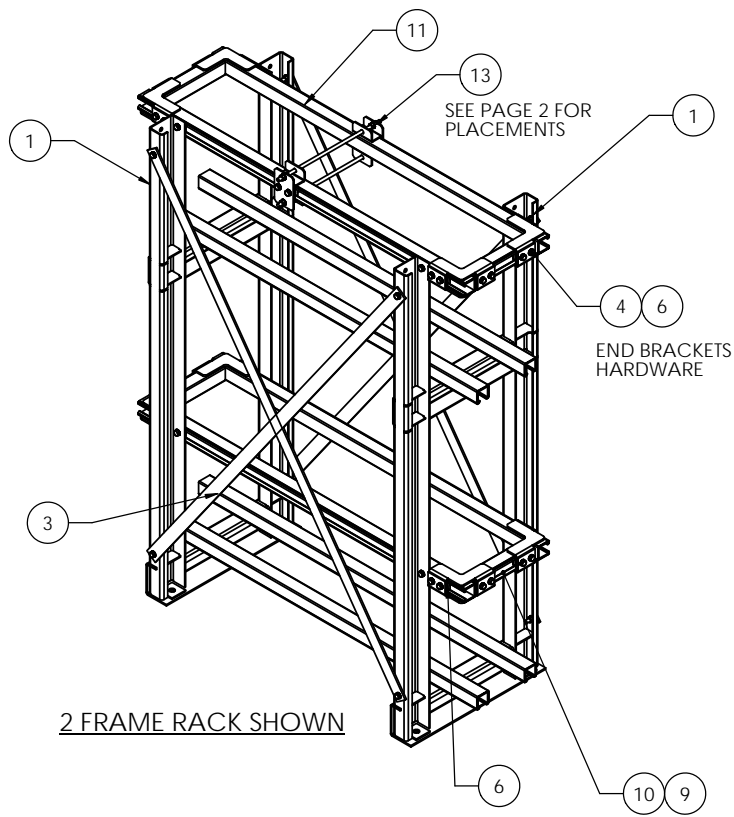


NOTES:

PARTS LIST																					
ITEM NO.	PART NUMBER	DESCRIPTION	4'	5'	6'	7'	8'	9'	10'	11'	12'	13'	14'	15'	16'	17'	18'	19'	20'		
1	FRM-024300	FRAME, 2 TIER, ZONE 4, STT2V 900-1000	2	2	2	3	3	3	3	4	4	4	4	5	5	5	5	6	6		
2	BTR-000300	RAIL, BATTERY, 1.625 X 1.625 X "L"	8	8	8	8	8	8	8	8	8	8	8	8	8	8	8	8	8		
3	MIS-000300	PLASTIC COVER, BATT. RAIL, "L"	8	8	8	8	8	8	8	8	8	8	8	8	8	8	8	8	8		
4	HEXBOLT3/8-16X1-1/4ZINC	HBOLT 3/8-16 X 1-1/4", Z.P.	56	56	56	68	68	68	80	80	80	80	92	92	92	92	104	104			
5	EXTTOOTHWASHER3/8ZC	WASHER, EXTERNAL TOOTH, 3/8, ZC	64	64	64	80	80	80	96	96	96	96	112	112	112	112	128	128			
6	P1008	SIRUT NUT, 3/8-16	48	48	48	56	56	56	64	64	64	64	72	72	72	72	80	80			
7	BKT-000901	BRACKET, END, TOP, WCR, 3/8" HDWR	8	8	8	8	8	8	8	8	8	8	8	8	8	8	8	8			
8	BKT-002101	BRACKET, END, BOTTOM, WCR, 3/8" HDWR	8	8	8	8	8	8	8	8	8	8	8	8	8	8	8	8			
9	MIS-002000	PLASTIC COVER, BATT. RAIL, 9.0" LONG	4	4	4	4	4	4	4	4	4	4	4	4	4	4	4	4			
10	BRC-002500	END BRACE, WET CELL RACK, Z4, 9.0"	4	4	4	4	4	4	4	4	4	4	4	4	4	4	4	4			
11	SEE BRACE TABLE	BRACE, CROSS	REFERENCE BRACE TABLE FOR BRACE TYPE AND QTY.																		
12	HEXNUT3/8-16ZINC	HEX NUT, 1/2-13, ZINC	8	8	8	12	12	12	12	16	16	16	16	20	20	20	20	24	24		
13	KIT-003615	KIT, INTERMEDIATE SUPPORT, 15"	0	0	0	1	1	1	1	2	3	3	3	4	4	4	4	5	5		

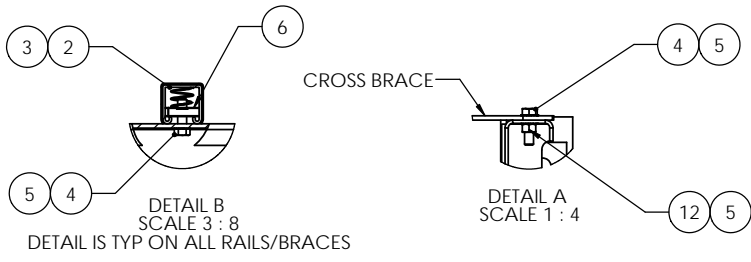
REVISIONS			
REV.	DESCRIPTION	DATE	APPROVED
A	INITIAL RELEASE	7-23-10	RNA
B	UPDATE PER CERTIFICATIONS SPECS	8-19-11	RNA

RACK DIMENSIONS AND OTHER SPECS					
PAR NUMBER	RACK LENGTH DIM "L" (FT)	DIM "A" (IN)	DIM "B" (IN)	DIM "C" (IN)	WEIGHT
WR233-2T1R-48-Z4	4	6	36	N/A	217
WR233-2T1R-60-Z4	5	12	36	N/A	233
WR233-2T1R-72-Z4	6	12	48	N/A	251
WR233-2T1R-84-Z4	7	6	36	N/A	340
WR233-2T1R-96-Z4	8	12	36	N/A	356
WR233-2T1R-108-Z4	9	6	48	N/A	377
WR233-2T1R-120-Z4	10	12	48	N/A	393
WR233-2T1R-132-Z4	11	12	36	36	480
WR233-2T1R-144-Z4	12	12	48	36	502
WR233-2T1R-156-Z4	13	6	48	48	523
WR233-2T1R-168-Z4	14	12	48	48	539
WR233-2T1R-180-Z4	15	6	48	36	628
WR233-2T1R-192-Z4	16	12	48	36	644
WR233-2T1R-204-Z4	17	6	48	48	665
WR233-2T1R-216-Z4	18	12	48	48	681
WR233-2T1R-228-Z4	19	6	48	36	770
WR233-2T1R-240-Z4	20	12	48	36	786

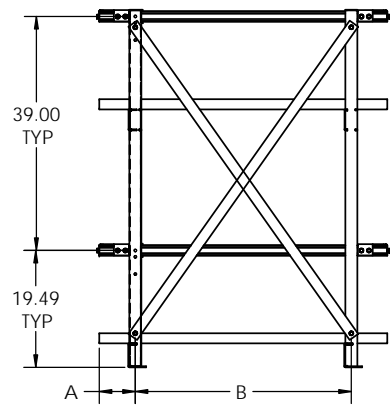


RACK MODEL	RACK LENGTH (FT)	BRACE P/N	
		BRC-001500	BRC-003800
WR233-2T1R-48-Z4	4	4	N/A
WR233-2T1R-60-Z4	5	4	N/A
WR233-2T1R-72-Z4	6	N/A	4
WR233-2T1R-84-Z4	7	8	N/A
WR233-2T1R-96-Z4	8	8	N/A
WR233-2T1R-108-Z4	9	N/A	8
WR233-2T1R-120-Z4	10	N/A	8
WR233-2T1R-132-Z4	11	12	NA
WR233-2T1R-144-Z4	12	8	4
WR233-2T1R-156-Z4	13	N/A	12
WR233-2T1R-168-Z4	14	N/A	12
WR233-2T1R-180-Z4	15	8	8
WR233-2T1R-192-Z4	16	8	8
WR233-2T1R-204-Z4	17	N/A	16
WR233-2T1R-216-Z4	18	N/A	16
WR233-2T1R-228-Z4	19	8	12
WR233-2T1R-240-Z4	20	8	12

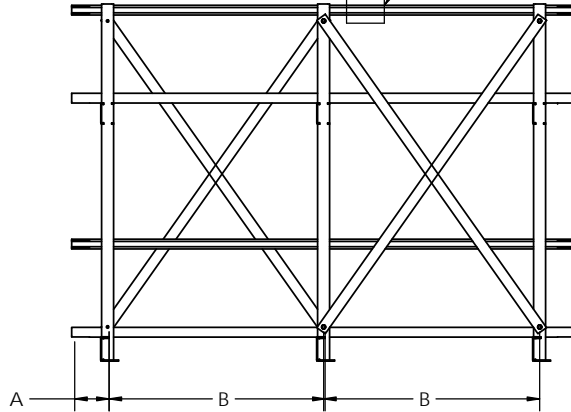
- NOTES:
- EPOXY POWDER COATED FRAMES
 - STANDARD RAILS AND SEISMIC BRACES ARE GALVANIZED.
 - REFER TO PAGE 2 FOR FRAME TO FRAME DIMENSIONS DEPENDING ON THE LENGTH OF RACK.
 - BRACES USED ARE DEPENDENT ON DIMENSIONS BETWEEN FRAMES. REFERENCE PAGE 2 AND BRACE TABLES TO DETERMINE LOCATION OF BRACES DEPENDING ON THE BRACE'S LENGTHS.



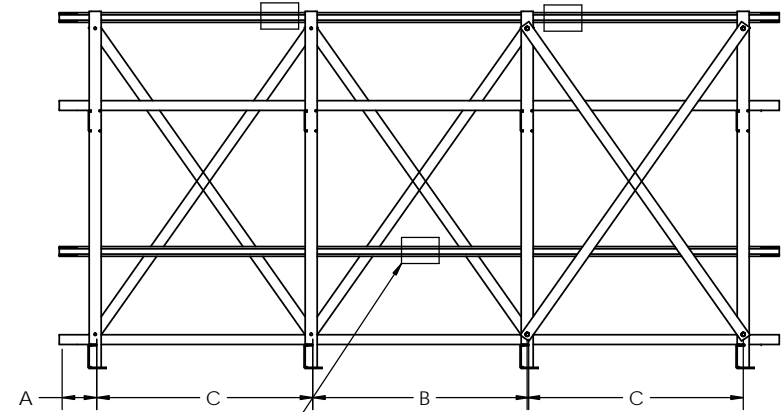
UNLESS OTHERWISE SPECIFIED			
DIMENSIONS ARE IN INCHES TOLERANCES:			
ANGULAR: MACH ± .5 BEND ± 1			
TWO PLACE DECIMAL ± .01			
THREE PLACE DECIMAL ± .005			
DRAWN	NAME	DATE	TITLE
CHECKED			STT SERIES 900-1000
ENG APPR			2 TIER/1 ROW, ZONE 4 RACKS
MFG APPR			SIZE DWG. NO. REV
QA			C WR233-2T1R Z4 B
USED ON	SEE NOTE 1	SEE NOTE 2	SCALE: 1:8 WEIGHT: SHEET 1 OF 2
DO NOT SCALE DRAWING			



4' - 6" RACKS (2 FRAMES)

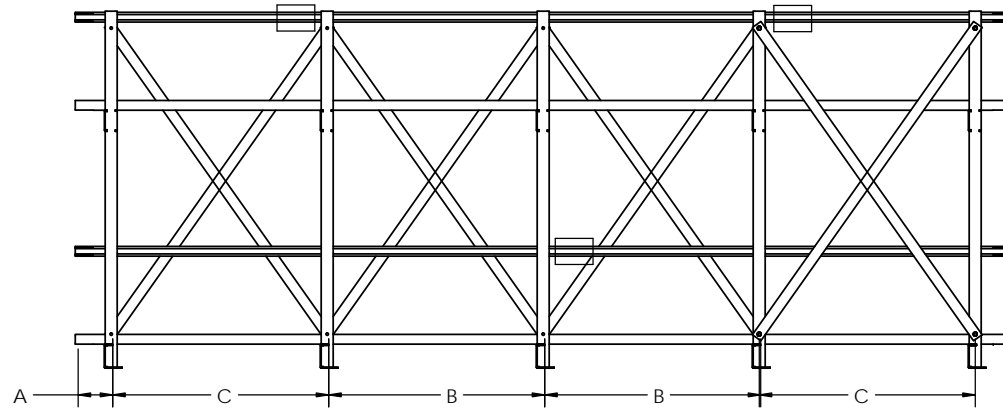


7' - 10" RACKS (3 FRAMES)

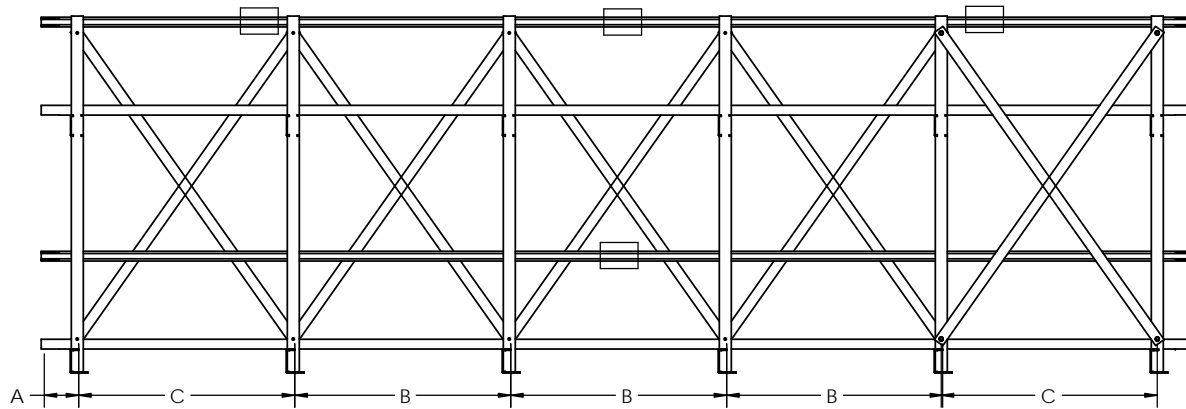


11' - 14" RACKS (4 FRAMES)

INTERMEDIATE SUPPORT FOR
BOTTOM TIER PROVIDED
FOR RACKS 12'-14" ONLY



15' - 18" RACKS (5 FRAMES)



19' - 20" RACKS (6 FRAMES)

LOCATE INTERMEDIATE SUPPORT NO MORE THAN
12" FROM FRAME UPRIGHTS. TYPICAL ON ALL RACKS