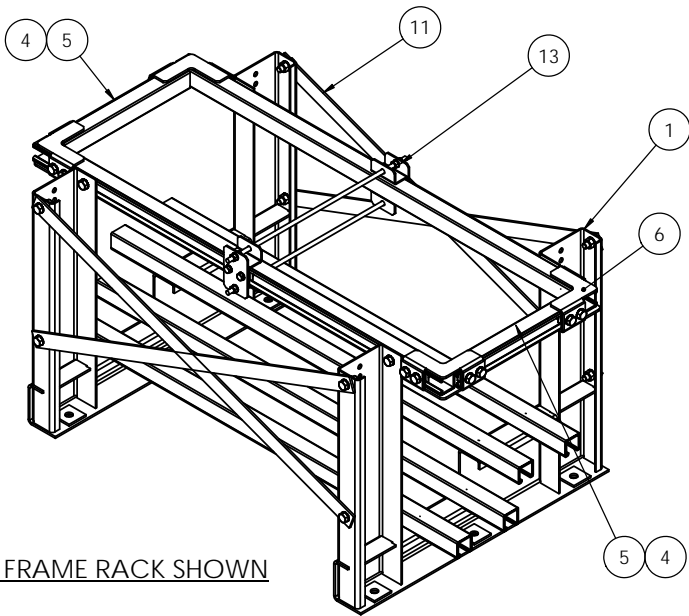
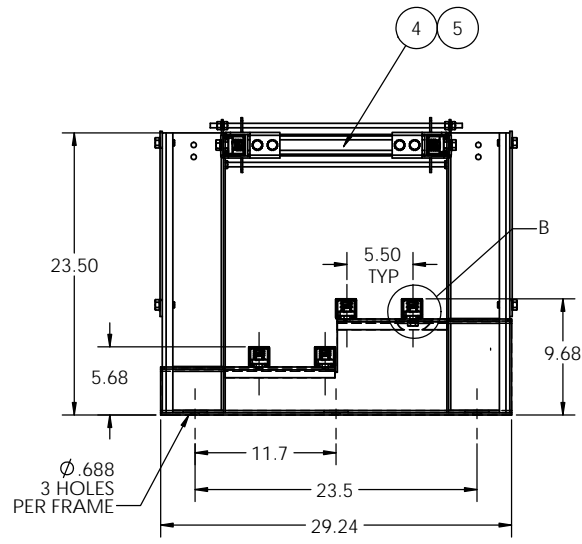


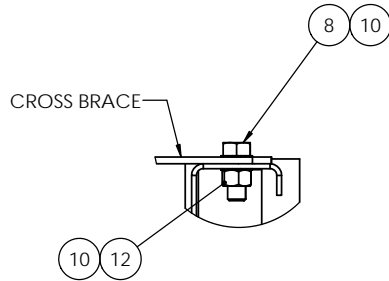
NOTES:



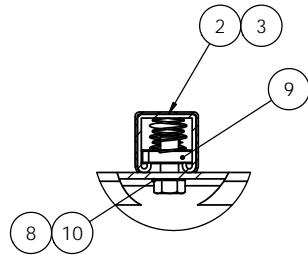
2 FRAME RACK SHOWN



TYP END VIEW



CROSS BRACE



DETAIL B
SCALE 3 : 8
DETAIL IS TYP ON ALL RAILS/BRACES

REVISIONS			
REV.	DESCRIPTION	DATE	APPROVED
A	INITIAL RELEASE	7-26-10	RNA
B	UPDATE PER CERTIFICATION CHANGES	8/22/2011	RNA

RACK DIMENSIONS AND OTHER SPECS					
PAR NUMBER	RACK LENGTH DIM "L" (FT)	DIM "A" (IN)	DIM "B" (IN)	DIM "C" (IN)	WEIGHT
WR191-1T2S-48-Z4	4	6	36	N/A	154
WR191-1T2S-60-Z4	5	12	36	N/A	166
WR191-1T2S-72-Z4	6	12	48	N/A	180
WR191-1T2S-84-Z4	7	6	36	N/A	245
WR191-1T2S-96-Z4	8	12	36	N/A	257
WR191-1T2S-108-Z4	9	6	48	N/A	274
WR191-1T2S-120-Z4	10	12	48	N/A	286
WR191-1T2S-132-Z4	11	12	36	36	346
WR191-1T2S-144-Z4	12	12	48	36	360
WR191-1T2S-156-Z4	13	6	48	48	376
WR191-1T2S-168-Z4	14	12	48	48	388
WR191-1T2S-180-Z4	15	6	48	36	454
WR191-1T2S-192-Z4	16	12	48	36	466
WR191-1T2S-204-Z4	17	6	48	48	482
WR191-1T2S-216-Z4	18	12	48	48	494
WR191-1T2S-228-Z4	19	6	48	36	557
WR191-1T2S-240-Z4	20	12	48	36	569

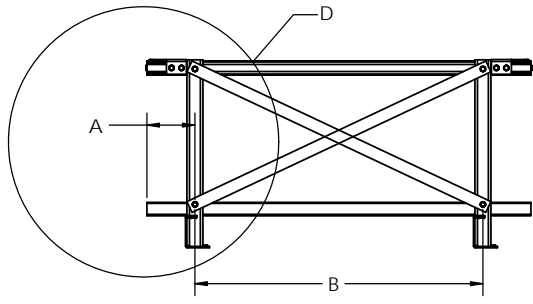
BRACE TABLE			
RACK MODEL	RACK LENGTH (FT)	BRACE P/N	
		BRC-008700	BRC-008800
WR191-1T2S-48-Z4	4	4	N/A
WR191-1T2S-60-Z4	5	4	N/A
WR191-1T2S-72-Z4	6	N/A	4
WR191-1T2S-84-Z4	7	8	N/A
WR191-1T2S-96-Z4	8	8	N/A
WR191-1T2S-108-Z4	9	N/A	8
WR191-1T2S-120-Z4	10	N/A	8
WR191-1T2S-132-Z4	11	12	NA
WR191-1T2S-144-Z4	12	8	4
WR191-1T2S-156-Z4	13	N/A	12
WR191-1T2S-168-Z4	14	N/A	12
WR191-1T2S-180-Z4	15	8	8
WR191-1T2S-192-Z4	16	8	8
WR191-1T2S-204-Z4	17	N/A	16
WR191-1T2S-216-Z4	18	N/A	16
WR191-1T2S-228-Z4	19	8	12
WR191-1T2S-240-Z4	20	8	12

PARTS LIST																					
ITEM NO.	PART NUMBER	DESCRIPTION	4'	5'	6'	7'	8'	9'	10'	11'	12'	13'	14'	15'	16'	17'	18'	19'	20'		
1	FRM-059700	FRAME, 2 STEP, ST2V 700-800, Z4	2	2	2	3	3	3	3	4	4	4	4	5	5	5	5	6	6	6	
2	BTR-000300	RAIL, BATTERY, 1.625 X 1.625 X "L"	6	6	6	6	6	6	6	6	6	6	6	6	6	6	6	6	6	6	
3	MIS-001900	PLASTIC COVER, BATT. RAIL, "L"	6	6	6	6	6	6	6	6	6	6	6	6	6	6	6	6	6	6	
4	BRC-003300	BRACE, END, SEISMIC, 14.75"	2	2	2	2	2	2	2	2	2	2	2	2	2	2	2	2	2	2	
5	MIS-002500	PLASTIC COVER, BATT. RAIL, 14.75"	2	2	2	2	2	2	2	2	2	2	2	2	2	2	2	2	2	2	
6	BKT-000902	BRACKET, CORNER, SHORT, 1/2" HDWR	4	4	4	4	4	4	4	4	4	4	4	4	4	4	4	4	4	4	
7	BKT-002102	BRACKET, CORNER, BOTTOM, 1/2" HDWR	4	4	4	4	4	4	4	4	4	4	4	4	4	4	4	4	4	4	
8	HEXBOLT1/2-13X1-1/4ZC	HEX BOLT, 1/2-13 X 1-1/4", ZC	36	36	36	44	44	44	44	52	52	52	52	60	60	60	60	68	68	68	
9	P1010	NUT, UNISTRUT, 1/2-13	28	28	28	34	34	34	34	40	40	40	40	46	46	46	46	52	52	52	
10	EXTTOOTHWASHER1/2ZC	WASHER, LOCK, EXTERNAL TOOTH, 1/2", ZC	44	44	44	44	58	58	58	72	72	72	72	86	86	86	86	100	100	100	
11	SEE BRACE TABLE	BRACE, CROSS	SEE CROSS BRACE CHART																		
12	HEXNUT3/8-16X1-3/4ZINC	HEX NUT, 3/8-16, ZINC	8	8	8	12	12	12	12	16	16	16	16	20	20	20	20	24	24	24	
13	KIT-003621	INTER. SUPPORT, WCR, 3/8 HDWR, Z1"	0	0	0	1	1	1	1	1	1	1	1	2	2	2	2	2	2	2	

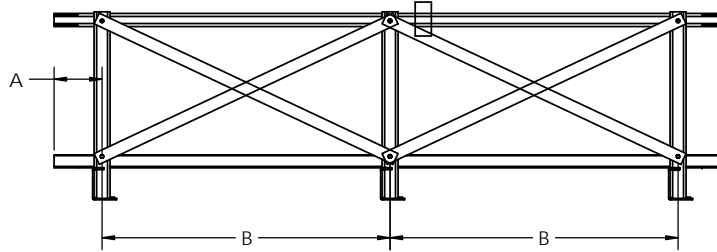
NOTES:

1. EPOXY POWDER COATED FRAMES
2. STANDARD RAILS AND SEISMIC BRACES ARE GALVANIZED.
3. REFER TO PAGE 2 FOR FRAME TO FRAME DIMENSIONS DEPENDING ON THE LENGTH OF RACK.
4. BRACES USED ARE DEPENDENT ON DIMENSIONS BETWEEN FRAMES. REFERENCE PAGE 2 AND BRACE TABLES TO DETERMINE LOCATION OF BRACES DEPENDING ON THE BRACE'S LENGTHS.

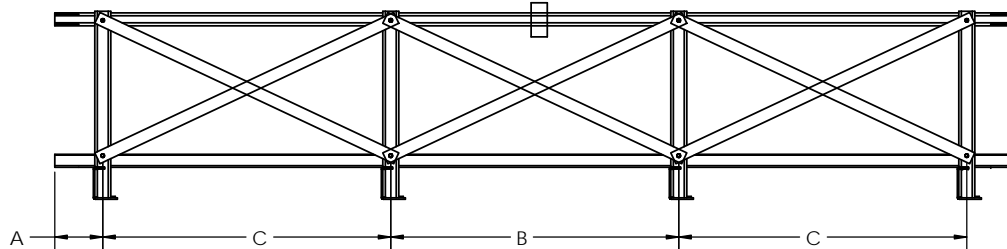
UNLESS OTHERWISE SPECIFIED		DRAWN		NAME	DATE	TITLE: STI SERIES 700-800 1 TIER/2 STEP ZONE 4 RACKS	
DIMENSIONS ARE IN INCHES TOLERANCES:		CHECKED				SIZE DWG. NO. REV C WR191-1T2S Z4 B	
ANGULAR: MACH ± .5 BEND ± 1 TWO PLACE DECIMAL ± .01 THREE PLACE DECIMAL ± .005		MFG APPR				SCALE: 1:8 WEIGHT: SHEET 1 OF 2	
PROJECTION		SEE NOTE 1					
MATERIAL		SEE NOTE 2					
FINISH		DO NOT SCALE DRAWING					
USED ON							



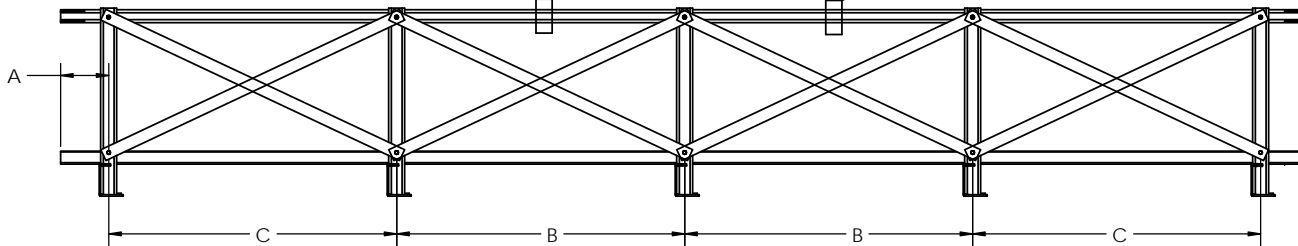
4' - 6' RACKS (2 FRAMES)



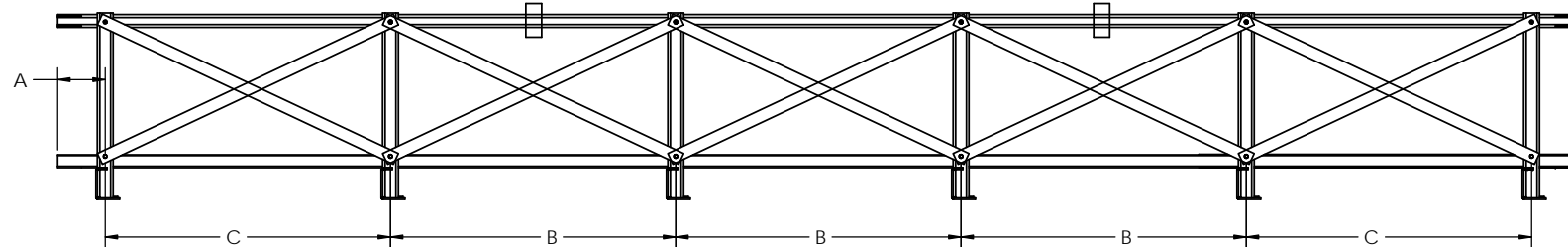
7' - 10' RACKS (3 FRAMES)



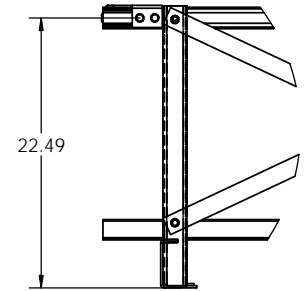
11' - 14' RACKS (4 FRAMES)



15' - 18' RACKS (5 FRAMES)



19' - 20' RACKS (6 FRAMES)



DETAIL D
DETAILS SHOWS HEIGHT PLACEMENT
OF SEISMIC BRACING. THE HEIGHT
IS DEPENDENT ON THE MODEL OF
STT BATTERY