

Walkie Transfer Carriages

The BHS Walkie Transfer Carriage (WTC) is a non-powered battery changer designed for smaller battery fleets. The WTC mounts to the user's existing pallet truck to change batteries in side-extraction applications. The WTC comes in three models and offers a dependable and versatile battery changing system at an affordable cost.



BHS provides custom battery handling equipment to meet any challenge.

Contact us at bhs@bhs1.com to learn more about fully customized solutions for the battery room and beyond.



Walkie Transfer Carriages



KEEP SMALLER FLEETS ON THE MOVE

The Walkie Transfer Carriage (WTC) is ideal for facilities with forklift fleets of 10 trucks or fewer. The WTC pulls batteries from side-extraction compartments with a mechanical hand wheel, so there's no need for any power supply on the unit itself.



LOWER SYSTEM COSTS BY USING EXISTING EQUIPMENT

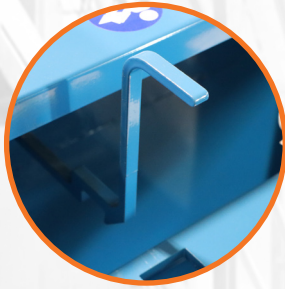
This manual battery changer mounts easily to your existing powered pallet truck. Fleets that don't require automated functions in their battery handling equipment will benefit from the WTC.



CUSTOMIZE THE BATTERY CHANGER TO YOUR FLEET

With a variety of compartment widths available and over a dozen optional features, warehouse managers can customize the Walkie Transfer Carriage to fit perfectly with their lift truck fleet. Drop-in rollers, three-way fork pockets, and permanent mounting are just a few of the many available add-ons. Boost productivity by customizing a Walkie Transfer Carriage and reducing your change-out times.

Features & Benefits



Extractor Arm Latch

Extractor Arm Latch automatically locks extractor arm in place when retracted

Easy Maintenance

Simple design made for easy maintenance



Battery Extraction

Hook-and-chain extractor arm controlled by the operator hand wheel



Positive Control

Hand wheel provides positive control of the extractor arm, eliminating the need for a power supply on the WTC



Utilize Existing Equipment

The WTC mounts easily to the user's existing powered pallet truck. Consult BHS for pallet truck specifications



Fleet Protection

Rubber Bumpers allow close contact, protecting the industrial lift truck fleet's finish during battery change-out

Spark-Proof Protection

Large 2.4" (61 mm) diameter rollers are standard on all models. Spark-proof, poly-sleeved rollers reduce corrosive build-up and extend product life (WTC-24 only).

Battery Containment

A steel Battery Containment Bar and battery flip-stop are used to enclose the compartment and keep the battery secure during transit.

Durable Construction

Heavy-duty steel construction and durable powder coat finish resists acid and scratches

SERVICING TRUCKS WITH OUTRIGGERS

If your forklifts have Outriggers/Base Legs or a picking platform, you will require a Cantilever option for additional arm reach.

If you have batteries longer than 40", you will require an Extended Bed option.



7" Cantilever (WTC-CAN-7)

Extends extractor arm reach an additional 7" (178 mm) and is ideal for use with outriggers

7" Cantilever & 6" Extended Bed (WTC-CAN-7-6)*

7" (178 mm) additional extractor arm reach is ideal for use with outriggers, and 6" (152 mm) bed extension accommodates longer batteries

14" Cantilever & 6" Extended Bed (WTC-CAN-14-6)*

14" Cantilever & 8" Extended Bed (WTC-CAN-14-8)*

OPTIONS FOR MOUNTING THE WTC TO THE HOST TRUCK

Whether mounting the WTC to one pallet truck or requiring the flexibility to mount to multiple trucks, the WTC can be customized to meet a variety of facility requirements. **Choose one of the following required options.**



Fork Pocket/Tongue Kit (WTC-FP-C)

Designed for applications where a pallet truck can't be dedicated full time to the battery changing process. Includes a welded Tongue Kit to enhance stability. Standard pallet truck rear-entry of forks.



Three-Way Fork Pocket (WTC-FP-3)

Designed for multi-purpose and multi-position. Side-entry fork pockets are designed for use with SDCB lift trucks. Rear-entry fork pockets can also be used with a pallet truck host truck when the bolt-on Tongue Kit is attached.



Permanent Mounting (WTC-MPJ)*

Operations that can dedicate a pallet truck to battery changing full-time can make the transformation permanent with factory welding to the customer-supplied pallet truck

Bolt-On Kit (WTC-BLTON)

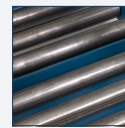
Semi-permanent mounting solution when the host truck is occasionally required for other tasks

SERVICING ROLLER HEIGHTS OUTSIDE STANDARD ATC RANGE

Consider the lowest and tallest roller height you will be servicing to determine if a Drop-in-Roller (DIR) will be needed. If you don't have space to store a DIR, consider a Two-Tier Roller Compartment.

If only running forklifts with a roller height above 12.5", order the Base Elevation option.

When you need to service forklifts with roller heights lower than 6.5", order the Low Profile Design.



Uncoated Rollers (WTC-UNCTD)

Reduces roller height by 0.25" (6 mm) to accommodate low battery compartments
Note: Available on WTC-24 model only



Two Tier Roller Compartment (WTC-2TIER)*

Combines two roller compartment levels in one unit, and is ideal for a combination of narrow aisle trucks and counter-balance trucks



Drop-In Rollers (WTC-DIR)*

Increases roller height up to 10" (254 mm) to reach battery compartments beyond pallet truck maximum lift range. Includes the appropriate staging stand for drop-in rollers, DIR Centering Angle and DIR Retainer Plate
Note: Recommended when WTC-2TIER is not feasible and extraction from multiple battery compartment heights is required



Drop-In Roller, Extended (WTC-DIR-LG)*

See WTC-DIR description above. This option features an extended Drop-in Roller for use with 6" (152 mm) or 8" (203 mm) extended bed options.



Base Elevation (WTC-BSELV)*

Permanently elevates WTC base up to 10" (254 mm) to reach battery compartments beyond pallet truck maximum lift



Low Profile-Bolt-In Slide (WTC-LP)*

Cost-effective WTC bolt-in slide option allows roller height to be adjusted 0.88" (22 mm) lower than standard unit

ADDED CONVENIENCE



Chain Guard Rubber Flap Kit (WTC-RGD)

Covers chains and sprockets to prevent dirt and debris from accumulating on or around chains and sprockets

*Consult factory for this option.

	WTC-24	WTC-30	WTC-36
Max. Load Capacity ¹	2,950 lb / 1338 kg	3,400 lb / 1542 kg	4,000 lb / 1814 kg
Battery Attachment	Hook & Chain	Hook & Chain	Hook & Chain
Primary Drive Reduction	4.5 to 1	4.5 to 1	4.5 to 1
Primary Drive Chain Size	#35	#35	#35
Rated Draw Bar Pull	50 lb / 23 kg Force @ Handwheel = 600 lb / 272 kg @ Extractor Arm	50 lb / 23 kg Force @ Handwheel = 600 lb / 272 kg @ Extractor Arm	50 lb / 23 kg Force @ Handwheel = 600 lb / 272 kg @ Extractor Arm
Full Travel Arm ²	22 Revolutions of Handwheel	22 Revolutions of Handwheel	22 Revolutions of Handwheel
Push/Pull Drive Chain Size	#50	#50	#50
Extractor Arm Drive Device	12" / 305 mm Diameter Finger Safe Handwheel	12" / 305 mm Diameter Finger Safe Handwheel	12" / 305 mm Diameter Finger Safe Handwheel
Minimum Service Aisle Width Required ³	12' / 3.66 m	12' / 3.66 m	12' / 3.66 m
Roller Diameter	2.4" / 61 mm	2.4" / 61 mm	2.4" / 61 mm
Roller Shaft Size	7/16" Hex / 11 mm	3/4" Hex / 19 mm	3/4" Hex / 19 mm
Battery Width	6" Min / 23" Max 152 mm Min / 584 mm Max	6" Min / 29" Max 152 mm Min / 737 mm Max	6" Min / 35" Max 152 mm Min / 889 mm Max
Battery Length ⁴	12" / 305 mm Min	12" / 305 mm Min	12" / 305 mm Min
Overall Length	64.25" / 1632 mm Standard 71.25" / 1810 mm CAN-7 Option 78.25" / 1988 mm CAN-14 Option	64.25" / 1632 mm Standard 71.25" / 1810 mm CAN-7 Option 78.25" / 1988 mm CAN-14 Option	64.25" / 1632 mm Standard 71.25" / 1810 mm CAN-7 Option 78.25" / 1988 mm CAN-14 Option
Overall Width	37.5" / 953 mm	43.5" / 1105 mm	49.5" / 1257 mm
Overall Height	46.25" / 1175 mm	46.25" / 1175 mm	46.25" / 1175 mm
Base to Roller Height	3" / 76 mm	3" / 76 mm	3" / 76 mm
Roller Width	24.5" / 622 mm	30.5" / 775 mm	36.5" / 927 mm
Extended Arm Reach (Beyond Roller Bed)	4" / 102 mm Standard 11" / 279 mm CAN-7 18" / 457 mm CAN-14	4" / 102 mm Standard 11" / 279 mm CAN-7 18" / 457 mm CAN-14	4" / 102 mm Standard 11" / 279 mm CAN-7 18" / 457 mm CAN-14
Rated Draw Bar Pull	1,000 lb / 453 kg	1,000 lb / 453 kg	1,000 lb / 453 kg
Average Holding Force	750 lb / 340 kg Vacuum 775 lb / 351 kg Magnet	1,000 lb / 453 kg Vacuum 775 lb / 351 kg Magnet	1,000 lb / 453 kg Vacuum 775 lb / 351 kg Magnet
Service Weight (unloaded)	525 lb / 238 kg	635 lb / 288 kg	700 lb / 317 kg

NOTE: BHS recommends that high-speed travel be disabled on pallet truck and maximum speed set at turtle or lowest setting.

1. Verify capacity of pallet truck being used at the specified load center. Load center increases by 0.5" (13 mm) for every inch of battery over 38" (965 mm) in length. Certain options may affect load capacity. Consult factory.
2. Standard length (non-cantilever units) only.
3. Varies with size and length of pallet truck and selected WTC options.
4. Consult factory for additional options.

IMPROVE YOUR BATTERY ROOM

BHS' full line of industry-leading equipment can help any facility maintain a productive battery room. From battery and charger stands, to cable management and safety accessories, BHS has the total solution to fit the needs of any size facility.



NORTH AMERICA: P.O. Box 28990, St. Louis, MO 63132 USA • 1.800.BHS.9500 • Fax: 314.423.6444 • sales@bhs1.com • BHS1.com
INTERNATIONAL: P.O. Box 12429, St. Louis, MO 63132 USA • +1 314 423 2075 • Fax: +1 314 423 3034 • sales@bhs1global.com
 Specifications are subject to change without notice. ©2007–2021 BHS, Inc. St. Louis, MO. Data Sheet: PL-1600 01/21

