

If a battery isn't operating efficiently, neither is the equipment it powers.

Without proper maintenance, even the best equipment will fail prematurely and increase your costs.

Well-maintained batteries are safe batteries.

Avoid exposing your employees to acid and corrosion. Contract Exponential Power to service and clean your batteries on site. All hazardous waste will be collected and disposed of per EPA regulations, freeing your company of hazardous waste disposal responsibilities.



Exponential Power offers:

- Field Service
- Full Maintenance
- Preventative Maintenance
- Battery Wash Service
- In-Shop Repair/Reconditioning
- Environmental Assistance
- Personalized Training
- Battery Changing System Repair & Maintenance
- Battery Monitoring Systems w/ Remote Access
- Rental Batteries & Chargers



Custom Preventative Maintenance (P.M.)

Batteries | Battery Chargers | Battery Charging Systems

Does your forklift P.M. cover the maintenance you need for the battery?

Forklift contracts typically cover only very basic items, whereas Exponential Power offers more:

- Exponential Power has developed a comprehensive preventative maintenance program that draws from over 100 years of battery service expertise.
- Comprehensive tests are performed on batteries, chargers, and battery changing equipment, as well as any accessories such as single point filling systems.
- Safety and OSHA compliance audits are performed as well.



Your time is valuable!

Using a clear, brief format, our reports identify all problem areas and describe:

- What the problem is
- What will happen if it continues
- How to solve the problem



How often should a P.M. be performed?

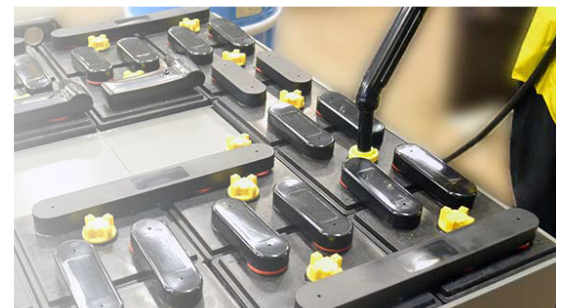
Preventative Maintenance Programs can require weekly, monthly, quarterly, semiannually or yearly inspections. Our service representative will evaluate your application and recommend a program that fits both your needs and your application.

On-Site Battery Cleaning and Wash Service

Lengthen service life and eliminate environmental concerns by having Exponential Power clean your batteries with our self-contained wash system.

What can happen if a battery is not cleaned regularly?

- Battery life can be reduced.
- Corrosion can cause battery cells to rupture and leak.
- Metal cases can corrode and become damaged and unsafe.
- Electrolyte can damage operator's clothes and irritate the skin.
- Voltage leaks to ground can create nuisance electrical faults.
- Lifting ears can corrode, affecting the structural integrity of the lift ear and causing potential safety issues.



How often should a battery be cleaned?

This depends mainly on how well the batteries are watered. In many instances an annual wash is adequate. However, if over watering occurs regularly and/or it is a dusty or dirty environment, more frequent washing may be required.

In-Shop and Field Service

Servicing All Makes and Models

Field Service

In many cases, we can fix your battery or charger right in your plant, so you don't have the inconvenience of extended downtime.

Exponential Power mobile service trucks are equipped to provide immediate field service; Exponential Power service technicians can also provide on-site battery and charger surveys, OSHA regulation information and maintenance training.

Our service technicians are not only highly skilled and seasoned troubleshooters, they are also advisors, educators and consultants.

In-Shop Service

Exponential Power is one of the largest and most experienced battery facilities. Our modern shops are equipped with the latest in computerized charging and discharge testing equipment, and our facilities meet or exceed all state and federal environmental safety standards.

Rental Batteries & Chargers

Exponential Power has a large fleet of rental batteries and chargers for short or long term needs.

Pick-Up & Delivery Service

Exponential Power personnel will assist in ensuring that the battery removal and installation is done safely.

Battery and Charger Repair/Reconditioning

You may be surprised to learn how much money that poorly performing battery is really costing you!

Batteries can be repaired to

- Extend battery life
- Prevent damage to trucks
- Reduce motor and contact replacement
- Increase productivity
- Improve running hours
- Improve safety

Reconditioning during early detection can often double useful life, but if you delay you may totally destroy the battery and damage your truck's drive motor as well as other electrical components.

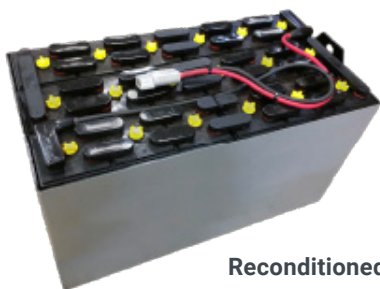
Unlike most service providers who simply replace cells because they do not possess hazardous waste treatment facilities, Exponential Power can perform internal evaluations (i.e. why did it fail?), saving you money by determining the root cause of the failure.

Typical reconditioning includes (but is not limited to)

- Clean and paint
- Remove corrosion
- Equalize charge
- Adjust specific gravity
- Six hour discharge capacity test
- Replace or repair defective cells
- Repair cover to jar leaks
- Remove sulfation
- Replace broken jars or covers
- Replace cables and connectors



Before Repair



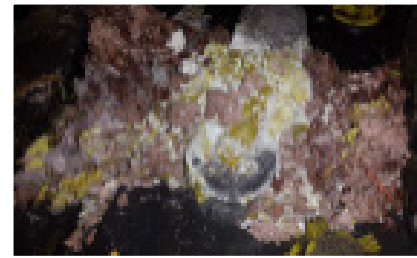
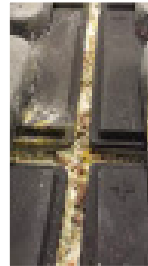
Reconditioned

All Batteries Are Fully Warrantied



The Environment

We can relieve you of the burden of safely disposing worn out batteries. All service technicians and drivers are equipped and licensed to transport batteries. The spent batteries are then stored inside an Exponential Power facility until they are transported directly to an EPA-approved recycler.



Battery and Charger On-Site or Remote Monitoring Service

(Requires Additional Equipment)

Description Of Report Parameters										Charge Termination Codes									
AMPH - Amp Hours	SOCT - Start Time	0 - Disconnect Prior to Charge	9 - Charge Curve Error																
CHOT - Total Charge Time	EOCT - End Time	1 - Normal	10 - Rectifier Over Heating																
BC-CC - Time, 80% to Charge Complete	BID - Battery	2 - Low Current Shut Down	11 - Unbalanced Line Amps																
STRTA - Start Amps	BST - Battery Start Temp	3 - Manual Stop	12 - DIED																
STRTV - Start Vols	BET - Battery End Temperature	4 - Disconnect While Charging	13 - Low Voltage Shutdown																
FINA - Finish Amps	CYCL - Battery Cell Size	5 - Backup Timer (0-80%)	14 - BID AH Shutdown																
TERM - Termination Code	CIAM - Battery AH Rating	6 - Backup Timer (80%-CC)	15 - Bad BID Shutdown																
EQTM - Equalize Time	STOOCV - Start Open Circuit Voltage	7 - Cool-down Interruption																	

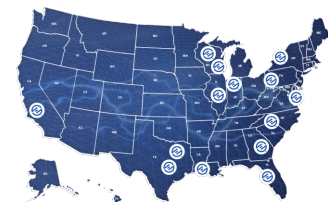
Ametek DataLink UC2000 Report																		
4/20/2012																		
2:48 PM																		
Blue = Equalize																		
Green = Charge Complete																		
Red = Abnormal Termination																		
REPORT GENERATED FROM FILE: C:\Documents and Settings\SBS\Desktop\log\thysen #18.txt DOWNLOADED ON 4/12/2012 10:23:28 AM																		
MONTH	DATE	AMPH	CHOT	BC-CC	STRTA	STRTV	FINA	TERM	EQTM	SOCT	EOCT	STOOCV	ERR	BEF	BEI	CVOL	STAT	
04	11	0563	07:13	02:30	0105	2.11	0028	2.60	01	00:00	02:03	09:21	1.97	0010	100	84	40	0645
04	10	0568	07:57	03:00	0105	2.12	0029	2.62	01	00:00	16:31	00:34	1.97	0007	99	84	40	0645
04	10	0607	07:55	02:53	0108	2.12	0028	2.61	01	00:00	04:31	12:32	1.96	0005	93	86	40	0645
04	09	0597	08:07	03:13	0106	2.16	0030	2.64	01	00:00	13:20	21:52	1.96	0007	93	84	40	0645
04	09	0058	03:18	00:16	0029	2.61	0015	2.68	01	03:00	02:10	05:30	2.17	0008	73	79	40	0645
04	08	0477	04:57	00:16	0104	2.23	0047	2.40	04	00:00	21:06	02:07	1.97	0008	72	77	40	0645
04	04	0634	08:40	03:20	0105	2.09	0028	2.59	01	00:00	11:39	20:24	1.93	0010	99	60	40	0645
04	04	0234	02:12	00:00	0107	2.13	0106	2.23	04	00:00	03:12	05:26	1.96	0010	91	82	40	0645
04	03	0602	07:07	03:00	0104	2.12	0029	2.59	01	00:00	11:37	19:40	1.98	0000	104	90	40	0645

By adding wireless remote monitoring to a P.M., Exponential Power can monitor batteries and chargers 24 hours a day, 7 days a week, to help detect fault or maintenance issues before they cost you money.

It also helps determine when battery replacements may need to be budgeted and allows for periodic review of fleet fixed management.

Reports show a comprehensive analysis of equipment statuses, error codes, etc. Fleet management becomes streamlined, organized and efficient.

Servicing the USA



HEADQUARTERS

WISCONSIN ___ Menomonee Falls
N56 W16665 Ridgewood Drive
Menomonee Falls, WI 53051
Phone: 262.703.5800

WISCONSIN ___ Appleton
N922 Tower View Drive, Unit J
Greenville, WI 54942
Phone: 920.757.1175

INDIANA ___ Fort Wayne
7603 Honeywell Drive
Fort Wayne, IN 46825
Phone: 260.420.5170

CALIFORNIA ___ Bakersfield
4842 Burr Street, Suite B
Bakersfield, CA 93308
Phone: 661.321.9929

ILLINOIS ___ Chicago
179 Easy Street
Carol Stream, IL 60188
Phone: 630.221.1700

GEORGIA ___ Atlanta
1649 Sands Place SE, Suite C
Marietta, GA 30067
Phone: 770.916.1747

TEXAS ___ Dallas
400 Union Bower Ct STE 416
Irving, TX 75061
Phone: 214.797.9158

MARYLAND ___ Baltimore
9051 Red Branch Road, Suite H
Columbia, MD 21045
Phone: 800.873.8793

NEW YORK ___ Rochester
400 Mason Road
Fairport, NY 14450
Phone: 585.425.1954

LOUISIANA ___ New Orleans
21448 Marion Lane
Mandeville, LA 70471
Phone: 985.801.5000

TEXAS ___ Houston
207 Deerwood Glen Drive
Deer Park, TX 77536
Phone: 713.395.4500

PENNSYLVANIA ___ Pittsburgh
106 Industrial Park Road
Brookville, PA 15825
Phone: 814.849.7171

NORTH CAROLINA ___ Charlotte
572 Griffith Road
Charlotte, NC 28217
Phone: 980.298.6131