

HydroCart Max

(Part Number INJ-HCT)

20 Gallon A/C Powered Mobile Water Supply
for Philadelphia Scientific Water Injector Systems™



Philadelphia Scientific®
industrial battery innovation

Installation Instructions:

1. Carefully remove the cart from the shipping carton.



2. Fill the tank to the desired level with deionized water.



3. Plug the HydroCart in to an approved electrical outlet.

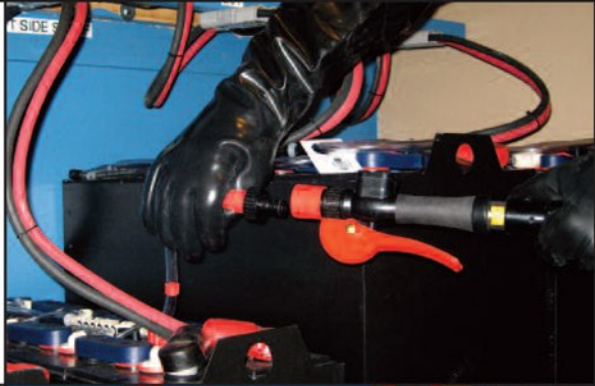


4. Turn the switch on to operate. When all watering is complete, turn the HydroCart off, disconnect the power cord. Retract the power cord and stow the output hose on the hooks provided on the back of the cart.

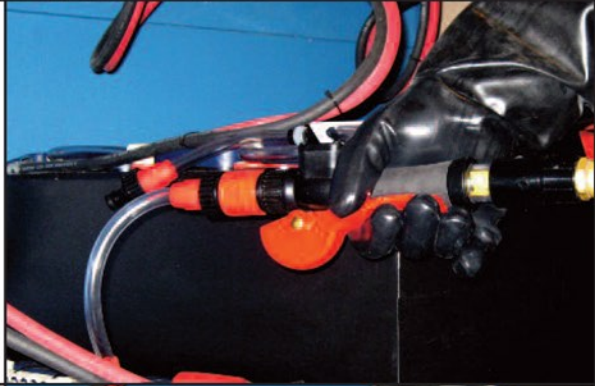


Operation Instructions:

1. Connect the Instant Valve Pro™ to the Input Assembly of the Water Injector System installed on the battery.



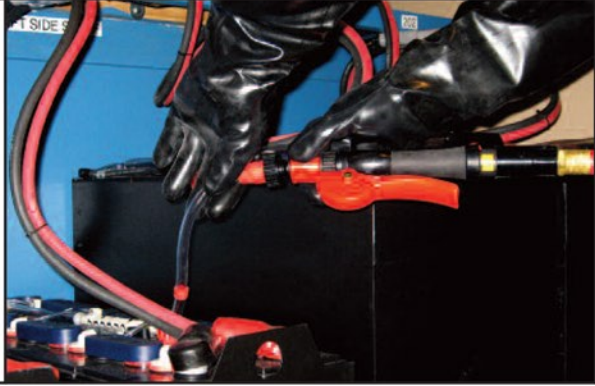
2. Squeeze the lever completely to fill the battery.
Do Not Partially Squeeze the Lever.



3. Watch the spinner mounted on the Instant Valve Pro. When it stops spinning, the filling is completed (about 15 seconds, usually).



4. Release the lever and then disconnect the Instant Valve Pro from the Water Injector System.





© 2013 Philadelphia Scientific LLC. All Rights Reserved. Philadelphia Scientific and the PS logo are registered trademarks of Philadelphia Scientific LLC. Water Injector System, Instant Valve PRO and HydroCart are trademarks of Philadelphia Scientific LLC. E&O.E.



Storage Battery Systems LLC
N56 W16665 Ridgewood Drive
Menomonee Falls, WI 53051

www.sbsbattery.com

800-554-2243

sbs@sbsbattery.com

PAK462

Rev 02/2013